

USGS Response to Hurricanes Harvey & Irma

NSTC Subcommittee on Disaster Reduction
September 7, 2017

Coastal Change Hazards Portal

← → ↻ 🏠 ⓘ <https://marine.usgs.gov/coastalchangehazardsportal/> ☆ 🇺🇸 🇩🇪

USGS science for a changing world **Coastal Change Hazards Portal** All ▾ Search... 🔍 🗑️ ❓

Hurricane Irma Active Storm

Potential coastal change impacts during a direct landfall of Hurricane Irma: NHC Advisory 30, 1100 AM EDT WED SEPT 6 2017

[More Info](#) [Zoom To](#) [Add To Bucket](#)

Explore Contents

- ▶ Probability of storm-induced collision
- ▶ Probability of storm-induced overwash
- ▶ Probability of storm-induced inundation
- ▶ Dune crest elevation
- ▶ Dune toe elevation
- ▶ Mean water levels
- ▶ Extreme water levels
- ▶ NWS NHC Forecast

Flood event viewer

USGS science for a changing world

Flood Event Viewer

ABOUT | GEOSEARCH

EVENT: **Harvey Aug 2017**
24 Aug 2017 thru 24 Sep 2017

BASEMAPS > | FILTERS >

CHANGE FILTERS

Current Filters

EVENT Harvey Aug 2017

GET DATA >

POWERED BY WIM

Map coordinates: 1:2,311,162 | 8 27.5083 | -96.0241

MAP LAYERS

Real-Time Data

Real-time stream gage layer only available at zoom level 9 and above. Please zoom in to view.

- ▲ Real-time Stream Gage
- ▲ Rapid Deployment Gage

Observed Data

- Barometric Pressure Sensor
- Storm Tide Sensor
- Meteorological Sensor
- Wave Height Sensor
- High Water Mark

Interpreted Data

- ◆ Peak Summary

Leaflet | Esri

Geospatial support

USGS **Event Support** USGS Natural Hazards Mission Area The National Map

+

-

Home

Refresh

Select the layer you want to swipe

NOAA Imagery 20170829b_RGB

USDA FSA, DigitalGlobe, GeoEye, Microsoft | Esri, HERE, Garmin, IPC

POWERED BY **esri**

HDDS: Hazards Data Distribution System

4. Search Results

If you selected more than one event to search, use the dropdown to see the search results for each specific event.

Show Result Controls

Event

Click here to export your results

201708_Hurricane_Harvey

« First < Previous 1 Next > Last »

Displaying 1 - 10 of 21

1



ID:MR00N29_536976W095_000604201708280000000
Acquisition Date:2017-08-28
Platform:MAP_PRODUCTS
Sensor:MAP
Agency:ESA
File Format:TIF



2



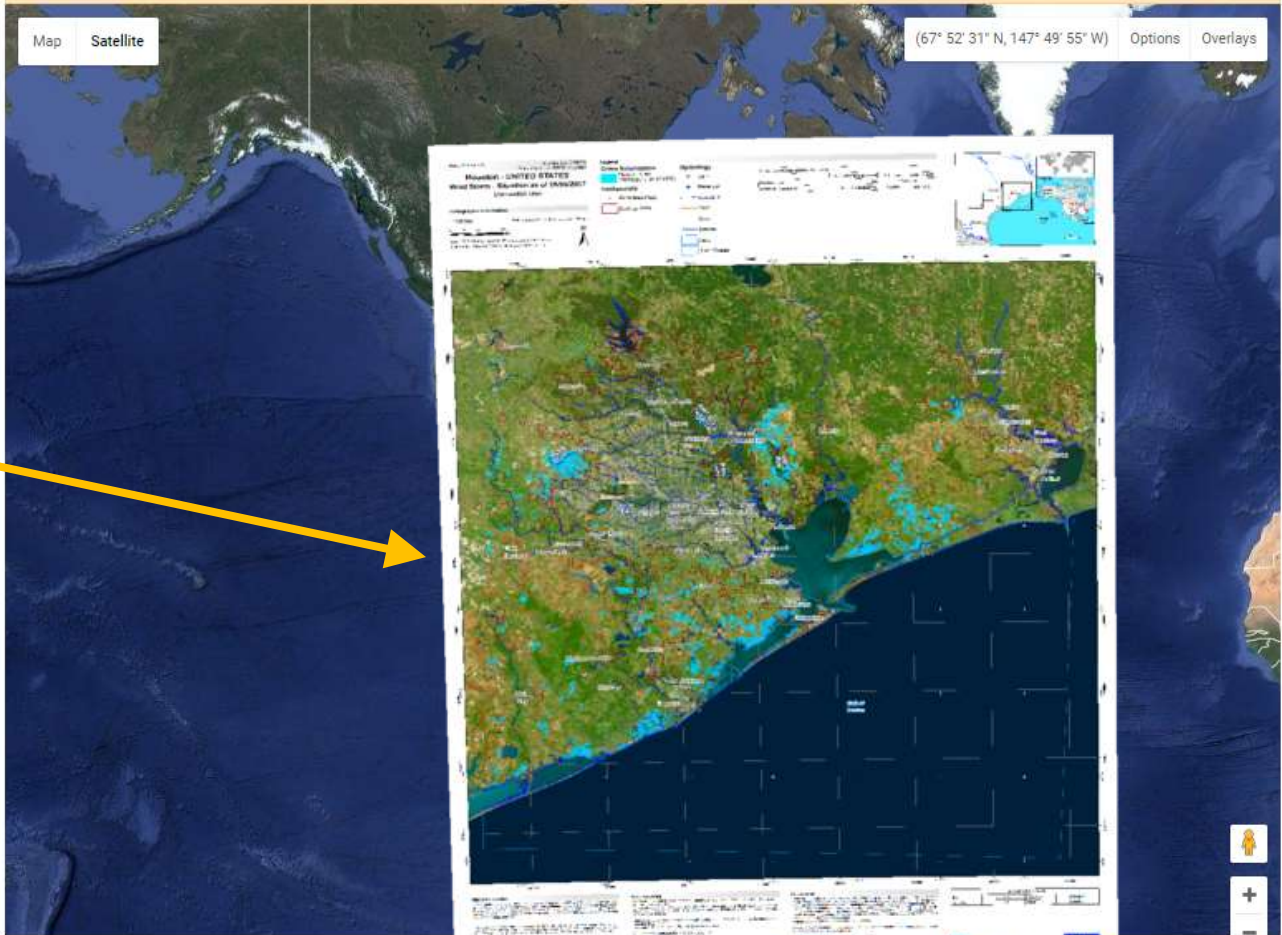
ID:MR00N30_011328W096_91453420170827000000000
Acquisition Date:2017-08-27
Platform:MAP_PRODUCTS
Sensor:MAP
Agency:ESA
File Format:SHAPE



3



ID:MR00N29_964076W096_93959620170827000000000
Acquisition Date:2017-08-27
Platform:MAP_PRODUCTS
Sensor:MAP
Agency:ESA
File Format:TIF



Event resources

- USGS Event Resources
 - [USGS Harvey Webpage](#)
 - [USGS Irma Webpage](#)
 - [Flood Event Viewer](#)
 - [TXWSC Harvey Dashboard](#)
 - [Coastal Change Hazards Portal](#)
 - [Coastal Total Water Level Viewer](#)
- USGS Geospatial Resources
 - [Hazards Data Distribution System \(HDDS\) Explorer](#)
 - [Disaster Coordination Preparedness & Response Map](#)

The background image shows a volcanic eruption with a large plume of ash and smoke rising from a mountain. In the foreground, several workers wearing hard hats and safety vests are visible, some operating surveying equipment like tripods and cameras. The scene is dimly lit, suggesting a hazy or smoky atmosphere.

Greg Shelton
Bureau Emergency Management Coordinator
gshelton@usgs.gov
703-648-5033

