



USGS Recent Flood Response Activities for Louisiana



Marie Pepler USGS Office of Surface Water

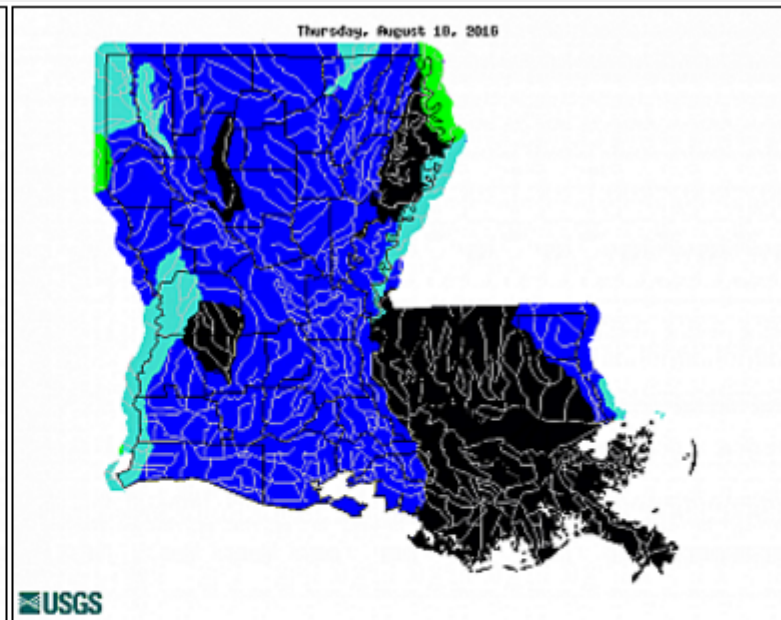
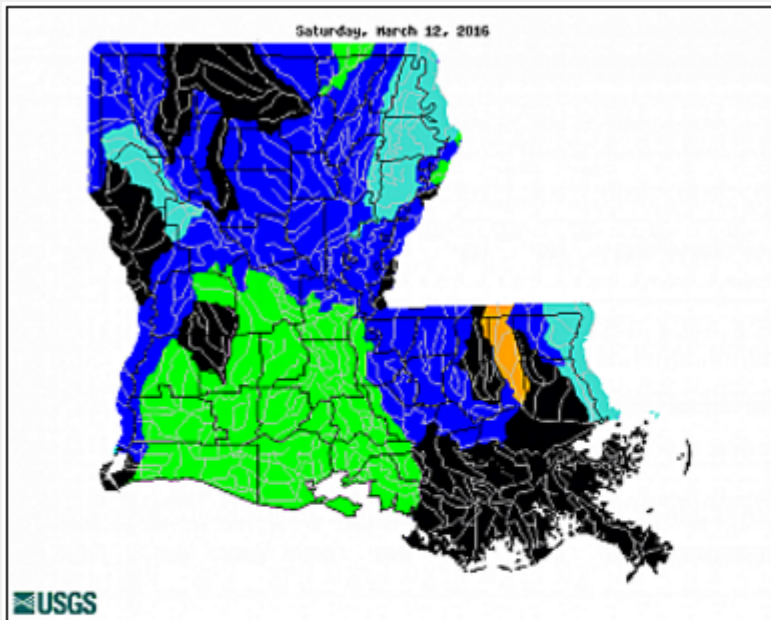
Robert Holmes USGS National Flood Hazard Coordinator

Todd Koenig USGS Deputy National Flood Hazard Coordinator

USGS Streamgauge Response

March 2016

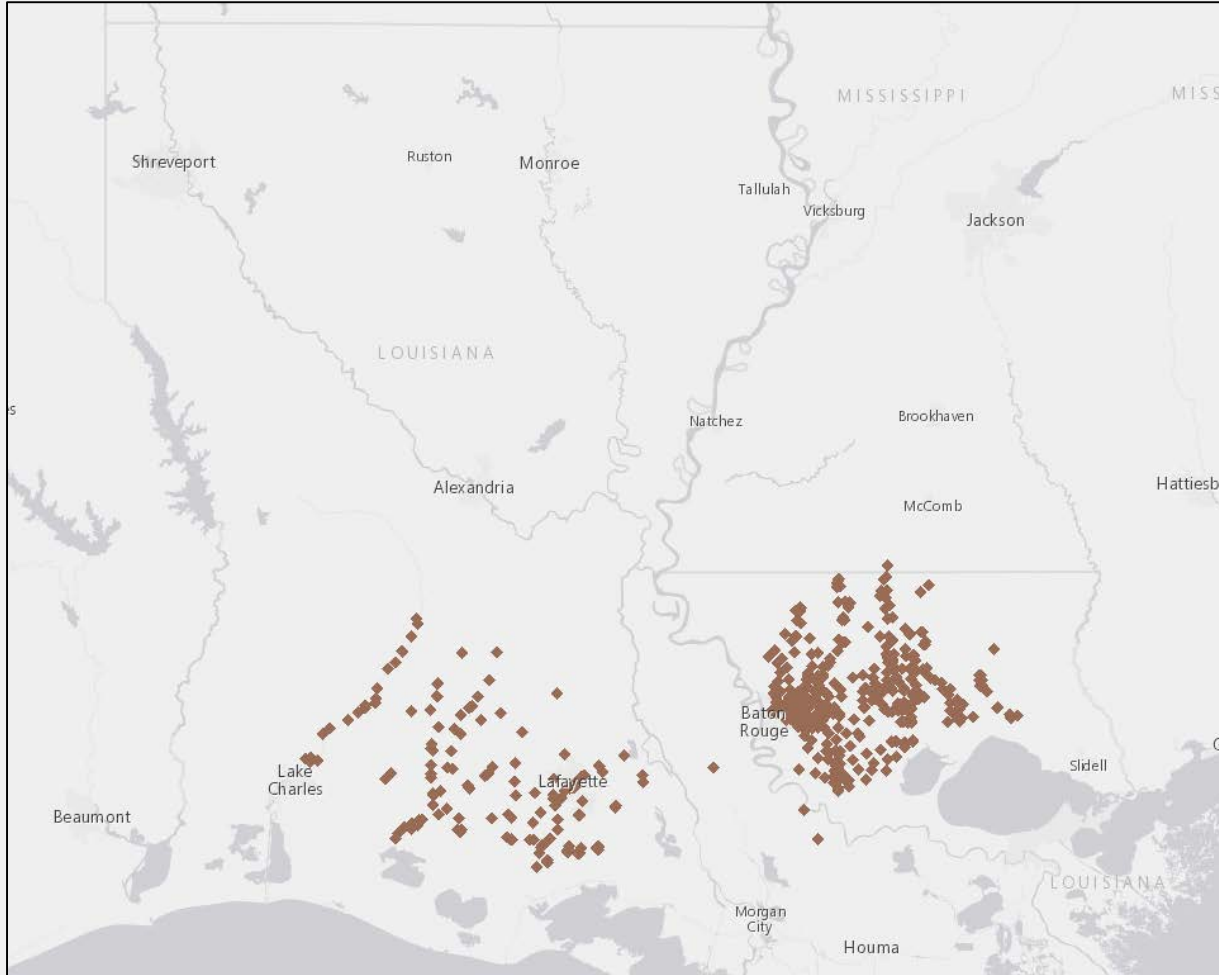
August 2016



Explanation - Percentile classes								
Low	<10	10-24	25-75	76-90	>90	High	No Data	
	Much below normal	Below normal	Normal	Above normal	Much above normal			



August Flood Response additional Data Collected with FEMA Region VI



591 High-Water Marks
502 sites
(371 surveyed as of 9/7)

**Inundation Maps
planned with FEMA
Region VI**

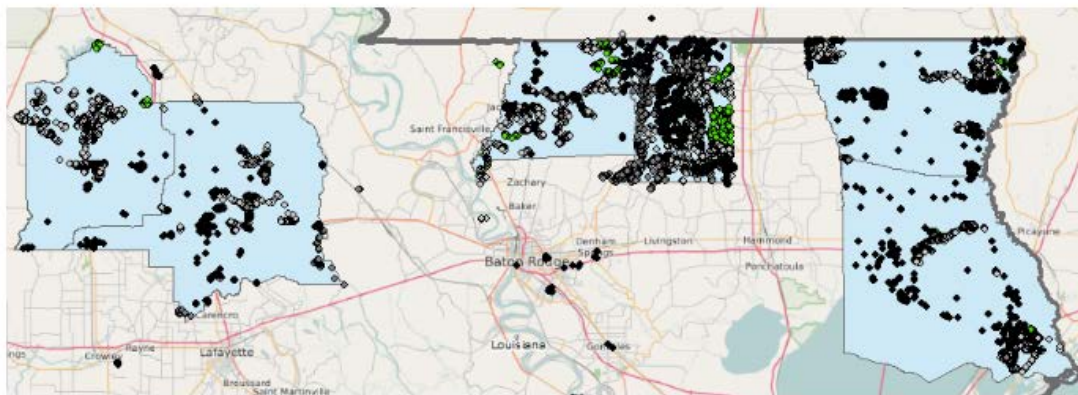
**Discharge
Computations for
Probabilities are in
progress**



http://water.usgs.gov/floods/events/2016/aug_la/

The National Map Corps- Volunteers for Emergency Response

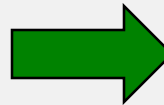
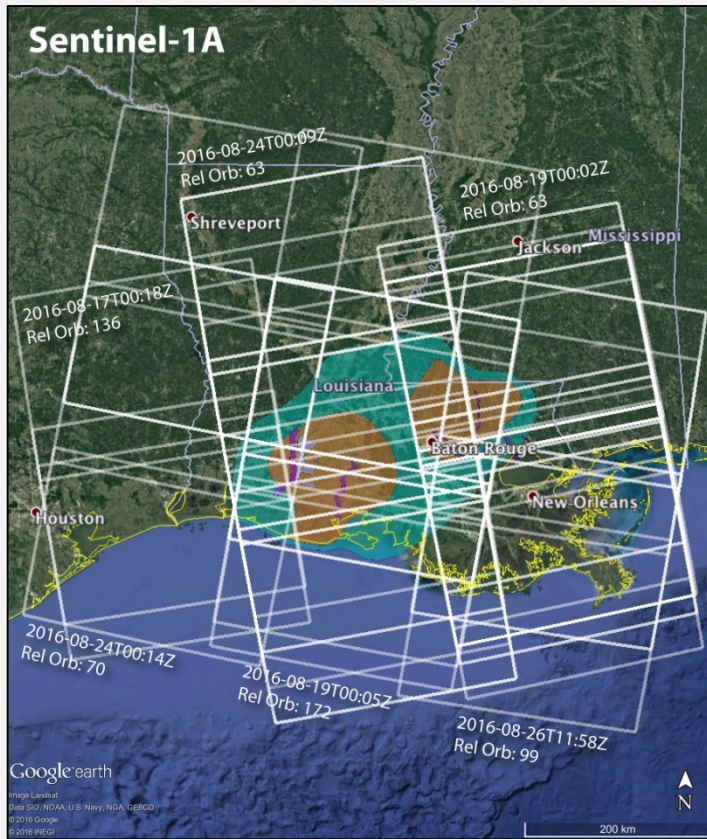
- Existing USGS volunteer (“citizen science”) application + active, experienced volunteers redirected to collect information about pre-flood conditions in support of FEMA
- To date (9/7/2016), 59 TNMCorps volunteers have collected about 26,000 points in order to provide accurate location information about where structures (houses, commercial buildings) were located prior to the flood



Dates of collection and
number of points collected

8/31/2016	6,199 points	Black
9/1/2016	8,903 points	Dark Grey
9/5/2016	23,785 points	Light Grey
9/6/2016	25,830 points	Green

Ground QA for Remote Sensing with NASA JPL



41 ground locations

**From 11:10 to 14:55 around a
13:10 collection time**