

Subcommittee on Disaster Reduction

USACE Activities in 2016 Louisiana Floods

8 Sep 2016

Tony Niles
Assistant Director for Civil
Works Research and
Development

U.S. Army Corps of Engineers

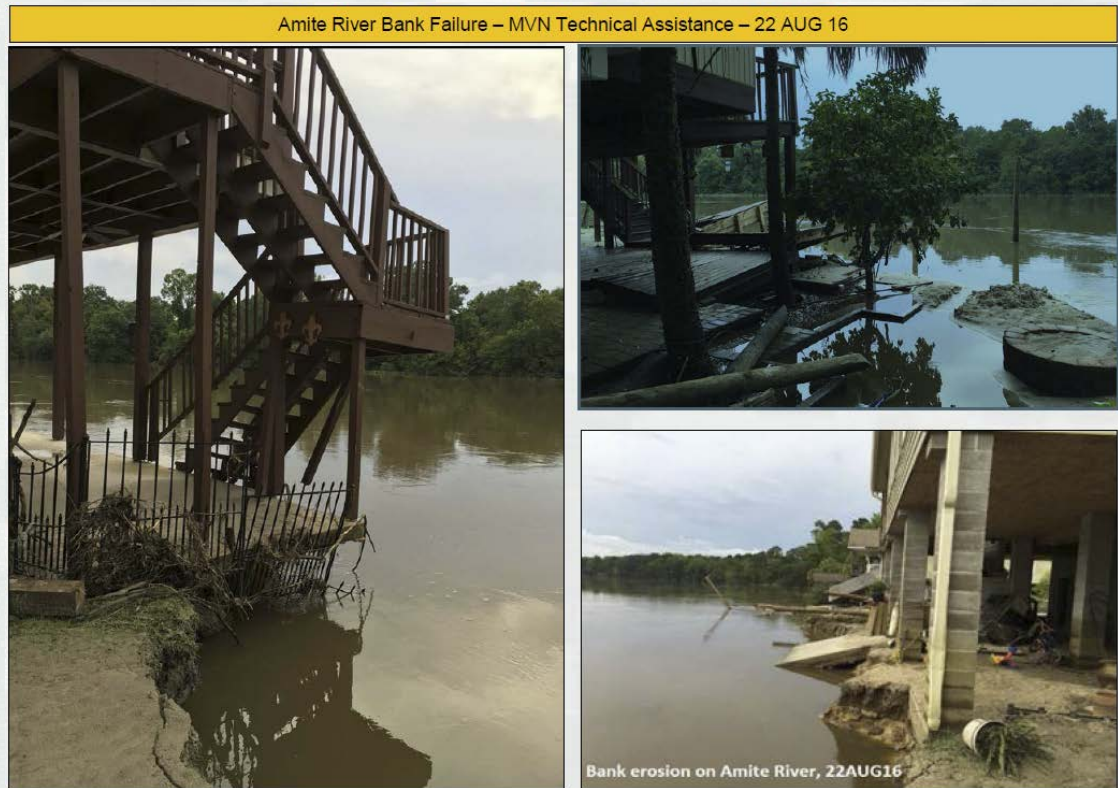


US Army Corps of Engineers
BUILDING STRONG®



PL 84-99 Mission Activities

- All efforts transitioned from response to recovery.
- Daily inundation maps provided to the state and requests for assistance are still being received and actioned.
- Assistance to the state for a bank failure on the Amite River near French Settlement, LA.



- Bayou Sorrel Lock and Port Allen Locks remain closed due to high flows (Minimal impacts).
- Geotechnical assistance to Plaquemines Parish on a levee breach cofferdam.



FEMA Mission Activities

- Debris removal and management.
- Infrastructure Systems Recovery Support.
- Environmental Historic Preservation.
- Critical public facilities technical expertise.
- Temporary Housing – Group Sites.
- Temporary Housing – Multi-Family Lease and Repair Program



FEMA Haul and Install Housing Units –
3 SEP 16



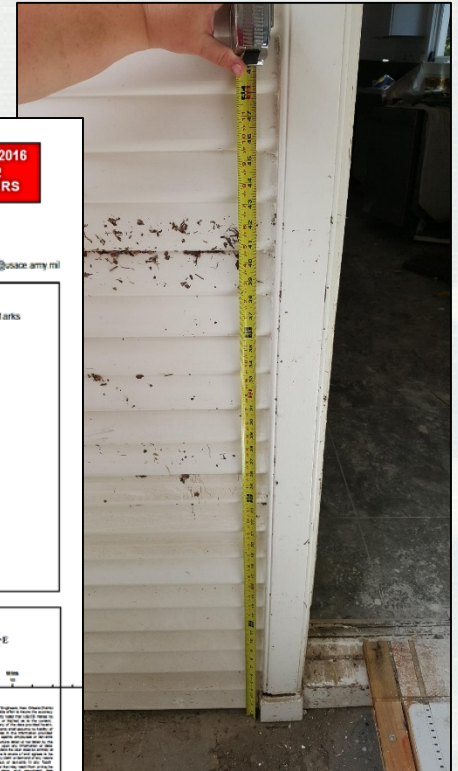
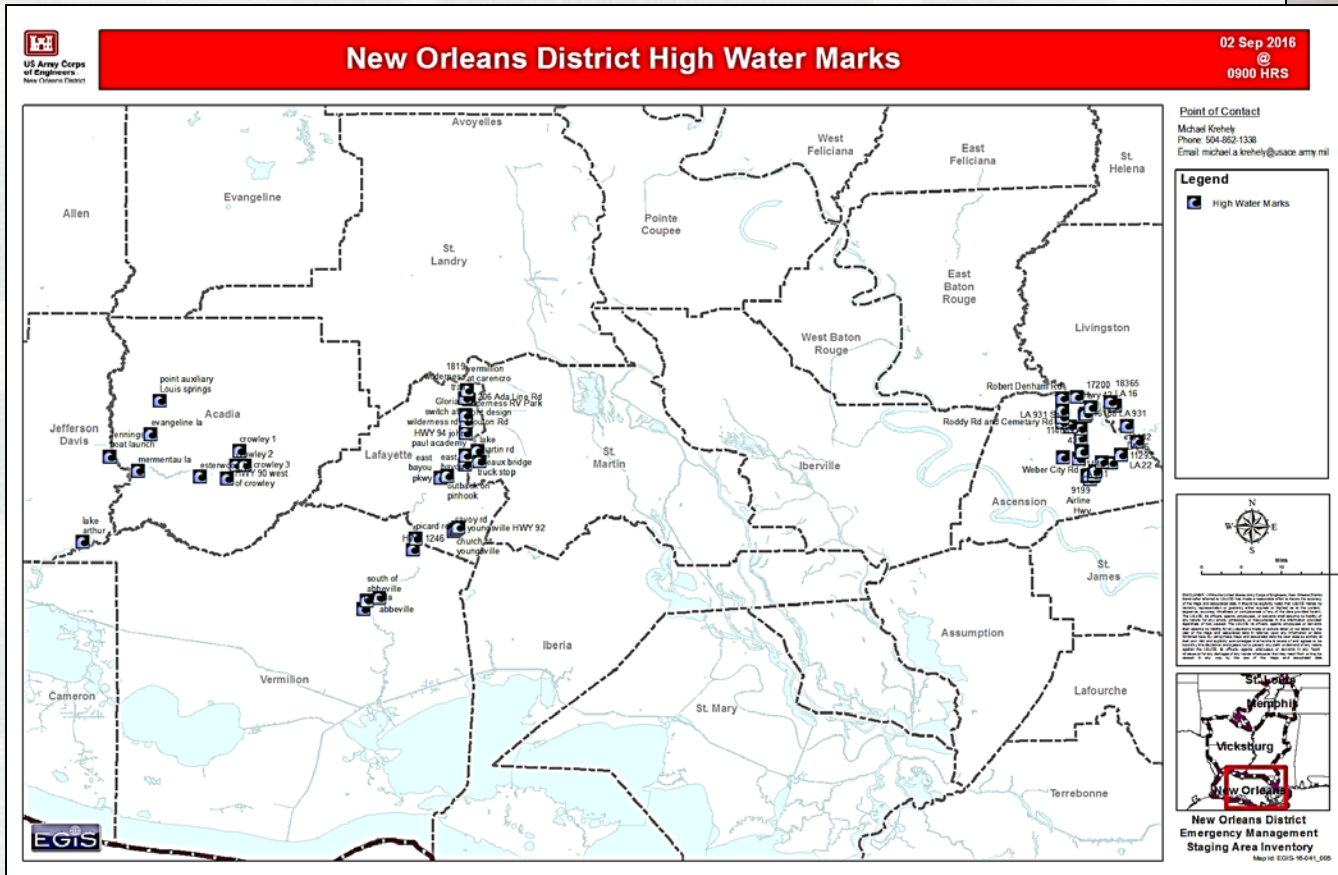
Smart Phone Data Collection



Mobile Information
Collection Application
(MICA)

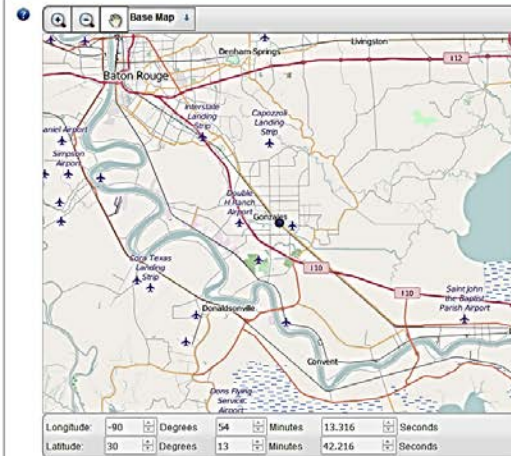


MICA High Water Marks Collection





High Water Marks Detail Report



High Water Mark Details

High Water Event	2016 August La Severe Weather
Site ID	Airline and S. Purpura Ave
Longitude	-90 903699
Latitude	30 228393
Coordinate	-90°54'13.32" 30°13'42.22"
Observation Type	HWM - High Water Mark
Inspection Date	08/19/2016 11:02
Inspector	-
Org Acquired By	U.S. Army Corps of Engineers, New Orleans District
Observation Type	HWM
Site Description	water mark on post
Height Description	22 inches from ground
Priority Level	-
Survey Date	-
Surveyor	-
Vertical Datum	-
Epoch	-
Elevation	-
Exclude Flag	N
Flood Protection Loc Code	-
Exclusion Notes	-

High Water Marks Media



1.1

High Water Marks Compiled and Managed in FREEBOARD Application

