

Roundtable Discussion

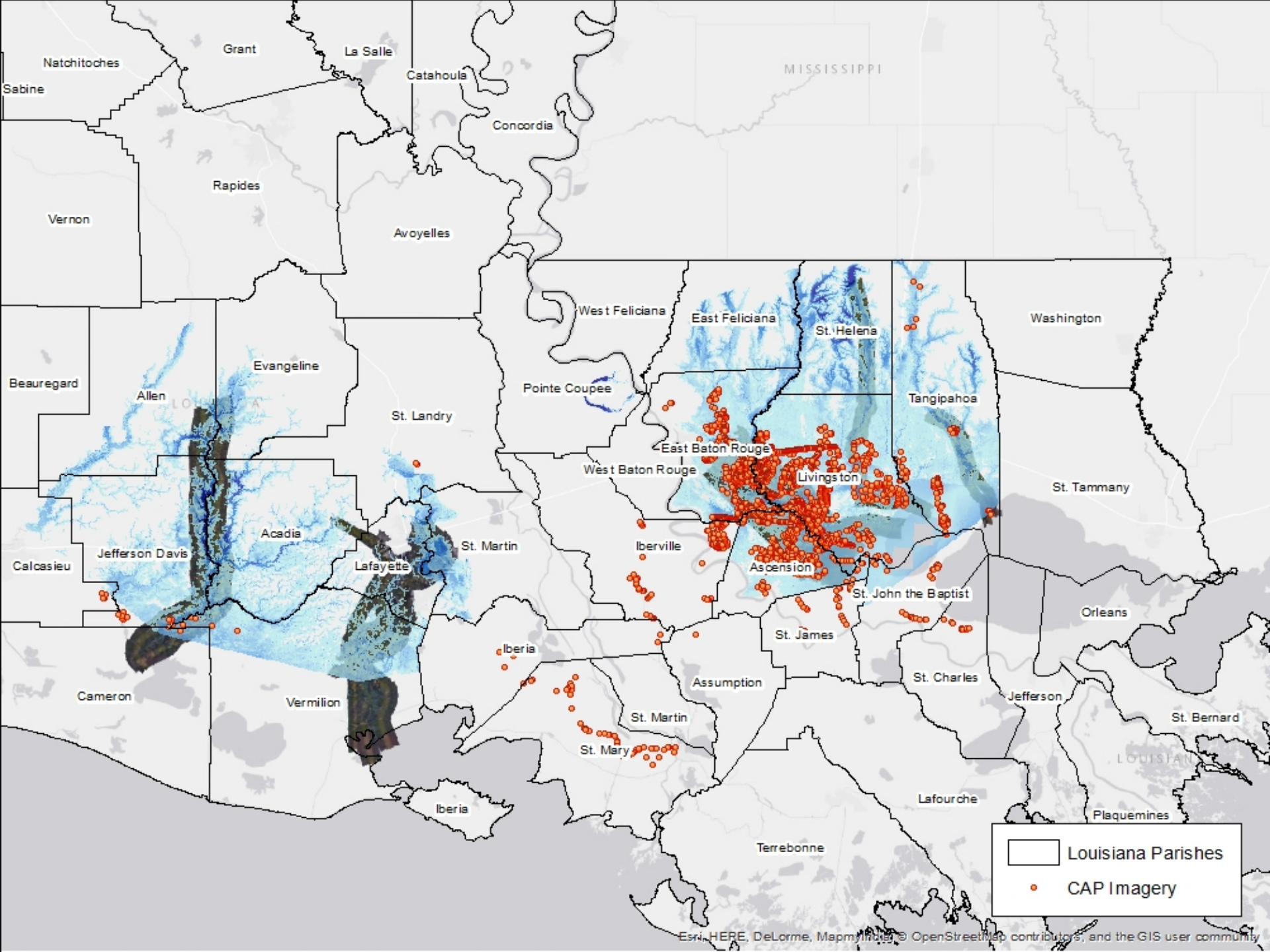
Lessons Learned from Louisiana Floods

September 8, 2016



FEMA

Christopher Vaughan
Geospatial Information Officer



Louisiana Flood Event

Parish	# Affected Structures	# Minor Structures	# Major Structures	Total Impacted Structures	Total Structures
	< 2' Depth	2' - 5' Depth	> 5' Depth		
Acadia	4,008	553	84	4,645	25,152
Ascension	12,160	5,691	1,496	19,347	56,271
East Baton Rouge	40,481	21,390	5,997	67,868	176,384
Iberia	101	90		191	27,576
Iberville	208	-	-	208	12,361
Jefferson Davis	1,236	595	169	2,000	13,956
Lafayette	3,999	697	107	4,803	87,220
Livingston	21,124	15,408	4,120	40,652	62,898
Pointe Coupee	647	626	183	1,456	22,916
St. Martin	893	399	22	1,314	22,994
Tangipahoa	11,136	4,014	1,235	16,385	42,551
Vermilion	7672	2249	95	10,016	25,910
Total	103,665	51,712	13,509	168,886	576,189

Geospatial analysis helped to expedite >\$10.5
in rental assistance for disaster survivors

Louisiana Flood Event

FEMA's GeoPlatform



DR 4277 and Baton Rouge Area Flooding

Damage Assessment Estimates

Current damage assessment estimates for specific areas are based on the best available data, such as gage data, high water marks, etc., and are not considered ground truth at this time. Most pages have over 10,000 points loading at once, please be patient.

Baton Rouge Area Flooding Open Data

Damage assessment data is available to download below:

- Acadia
- Ascension
- East Baton Rouge
- Lafayette
- Livingston
- Pointe Coupee
- St. Martin
- Tangipahoa
- Vermillion

Road Closures and Open Shelters

This map outlines open shelters, Disaster Recovery Centers (DRC), Mobile Emergency Response Support (MERS) vehicles, and road closures in response to Baton Rouge area flooding. All points are clickable for more information.

DSAT Interactions

A visualization of DR-4277 DSAT interactions with the public. Please click the points to view more information.

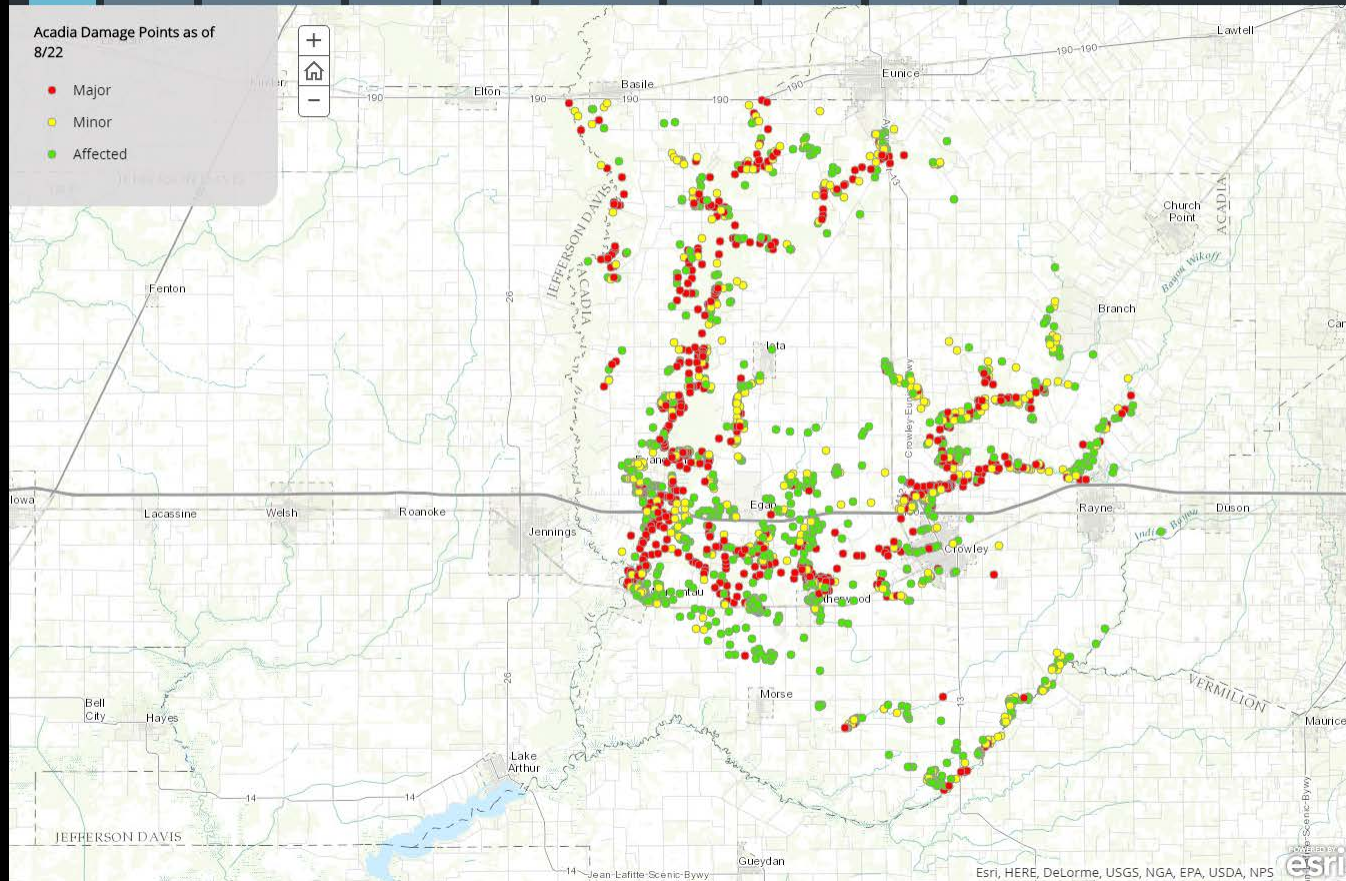
Region Specific Information

Embedded in this section is the [East Baton Rouge GIS Program](#) event application related to current flooding.

- Acadia
- Ascension
- East Baton Rouge
- Lafayette
- Livingston
- Pointe Coupee
- St. Martin
- Tangipahoa
- Vermillion
- Hexbin Aggregation

Acadia Damage Points as of 8/22

- Major
- Minor
- Affected



<http://fema.maps.arcgis.com>



FEMA