

# Response Manager Data Management



Region 6  
Louisiana Flood Response

# Response Manager



\* EPA owned software that was created to help provide a standard data structure for data collection and reporting for Response and Removal.

\* Data Records, Assessment, Photos, Documents – All tied together.

\* Synchronizes to a Central Database for consistent real time reporting and visualization

The screenshot displays the EPA Response Manager interface for a 'Drinking Water' incident. The main window shows a list of facilities with columns for ID, Facility Name, Type, Status, Address, City, County, State, zip, Region, Latitude, and Longitude. The first facility listed is '29 PALMS TRAILER PARK' with ID 'LA1117023'. An 'Assessment' pop-up window is open for this facility, showing a table of assessment records.

AssessmentID...	Type	Status	Damage Level	Comments	Phot...	Docu...
08/20/2016	Email	OK		Per Dennis...	0	0
08/20/2016	Email	OK	NO		0	0
08/15/2016	Phone	OK	NO		0	0
08/14/2016	Phone	OK	NO		0	0
08/14/2016		OUT		Unreachable	0	0

The bottom status bar shows: Today is: 9/6/2016, Current User: Latham, Janine (EPA 6, 1, 2, 3, 4, 5, 8, 9), Last synced successfully on 8/27/2016 1:31:14 PM.

\* Organizes data by “Modules” which equate to Data Streams associated with ESF-10/3

# Response Manager



Modules Used by the State and EPA:

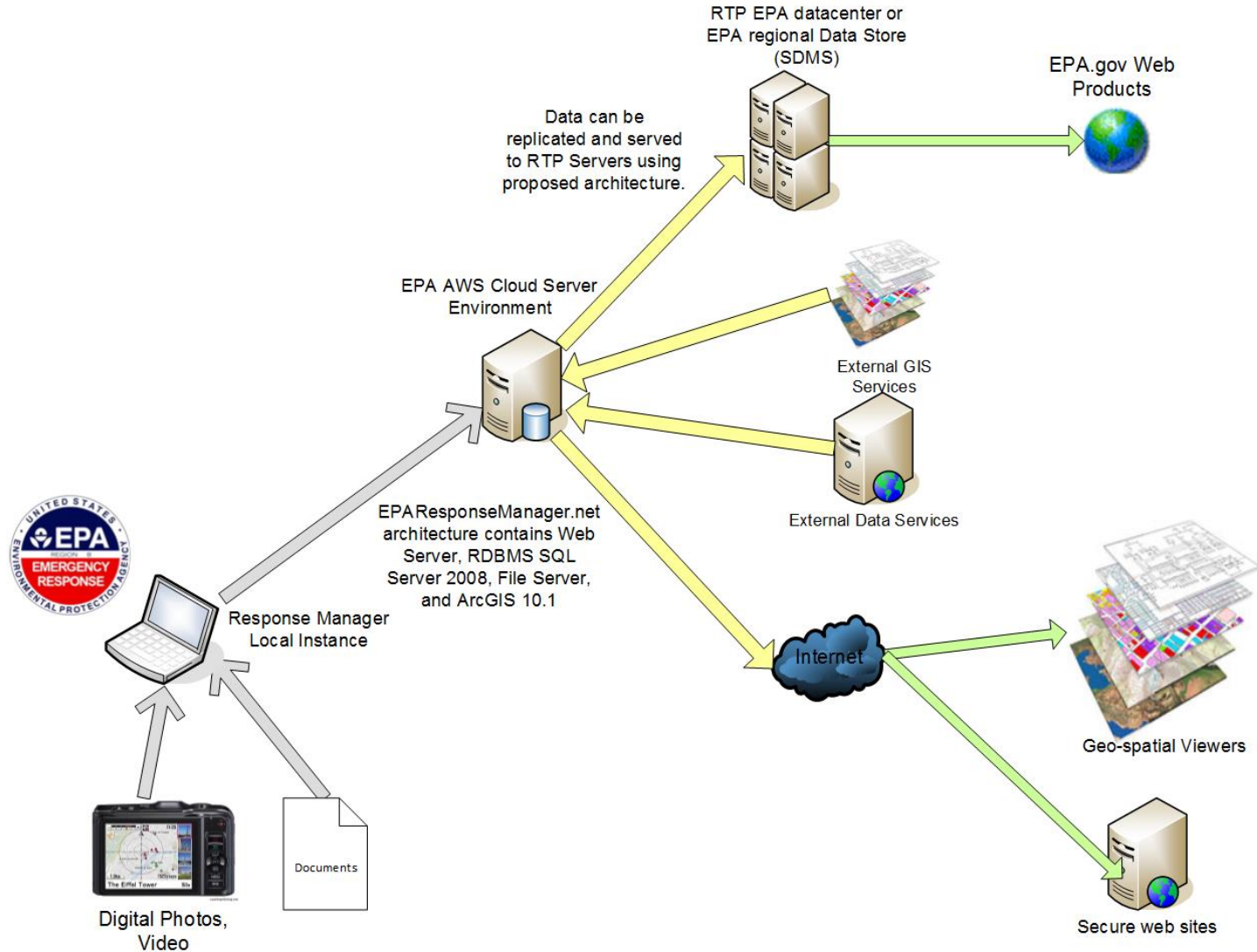
- \* **Drinking Water** – Drinking Water Facility Evaluations pre and post Event
- \* **Waste Water** – Waste Water Facility Evaluations pre and post Event
- \* **Facilities/Spills** – EPA and State Regulated Facilities (RMP, FRP, TRI, RCRA, Tier II) and orphaned Spills (Oil or HAZMAT) targeting and evaluation
- \* **Properties** – Lard Oil ER Home Property Assessment

# State of Louisiana Coordination



- \* EPA has coordinated with LDEQ and LDHH for use of Response Manager
- \* Conducted multiple Training and workshops in “off-season”
- \* Developed Data Management SOPs Ready for use and Deployment with use of Response Manager
- \* Created State Specific Pre/Post Assessment Forms
- \* Event and Planning Support Funding

# Architecture



# Reporting

## ArcGIS Rest Services

- \* DW, WW, Facility Assessment Information
- \* Shared with State and FEMA

## SITREP Story Map

- \* Displayed Assessment Data and Text/Matrix Details of Response Operations

The screenshot displays an ArcGIS Story Map interface. The browser address bar shows the URL: <https://epa.maps.arcgis.com/apps/MapJournal/index.html?appid=09769ee85c8a4f47b721d4ec80cf826d>. The page title is "Region 6 - Regional Emergency Operations Ce..." and the main heading is "LA Flooding 2016 SITREP". A green button indicates "No issues detected x".

### Lard Oil Company, INC. Oil Spill

EPA continues to provide oversight for the Lard Oil spill cleanup activities that has impacted a residential area in Denham Springs, LA. Most properties only have "residual" oil staining. LDHH has agreed to provide assistance with the response including the development of a fact sheet, individual homeowner consultations, input into assessment and cleanup plans, and the final public health determination of re-habitation of the homes. Ongoing activities include securing access agreements, conducting impact assessments and residential property cleanup. EPA has posted an incident update at [epa.gov/la](http://epa.gov/la). The oversight of this oil spill response is being funded by the Oil Spill Liability Trust Fund (OSLTF).

**LARD OIL - 1700 CST 8/30/2016**

72	Estimated Total Number of Houses within "Impact Zone"
40	Number of houses Oiled OUTSIDE
8	Number of Houses Oiled INSIDE
49	Number of Houses with Oil in YARD
48	Number of Houses with ACCESS AGREEMENTS Granted to both EPA and Lard Oil

The map on the right shows a residential area with streets including Florida Ave SW, Audubon St, North St, Capitol St, Richard St, Wanda Ave, and Edgewood Dr. A legend titled "LEGEND" defines the "Operations Layer" and "EPA Property Assessments":

- Oil Observed Internally (Red flame icon)
- Oil Observed Externally (Orange flame icon)
- Work Started Internally (Blue water drop icon)
- Work Started Externally (Light blue water drop icon)
- Assessment Completed (Green leaf icon)
- No Oil (Light green leaf icon)
- Work Complete (Yellow leaf icon)

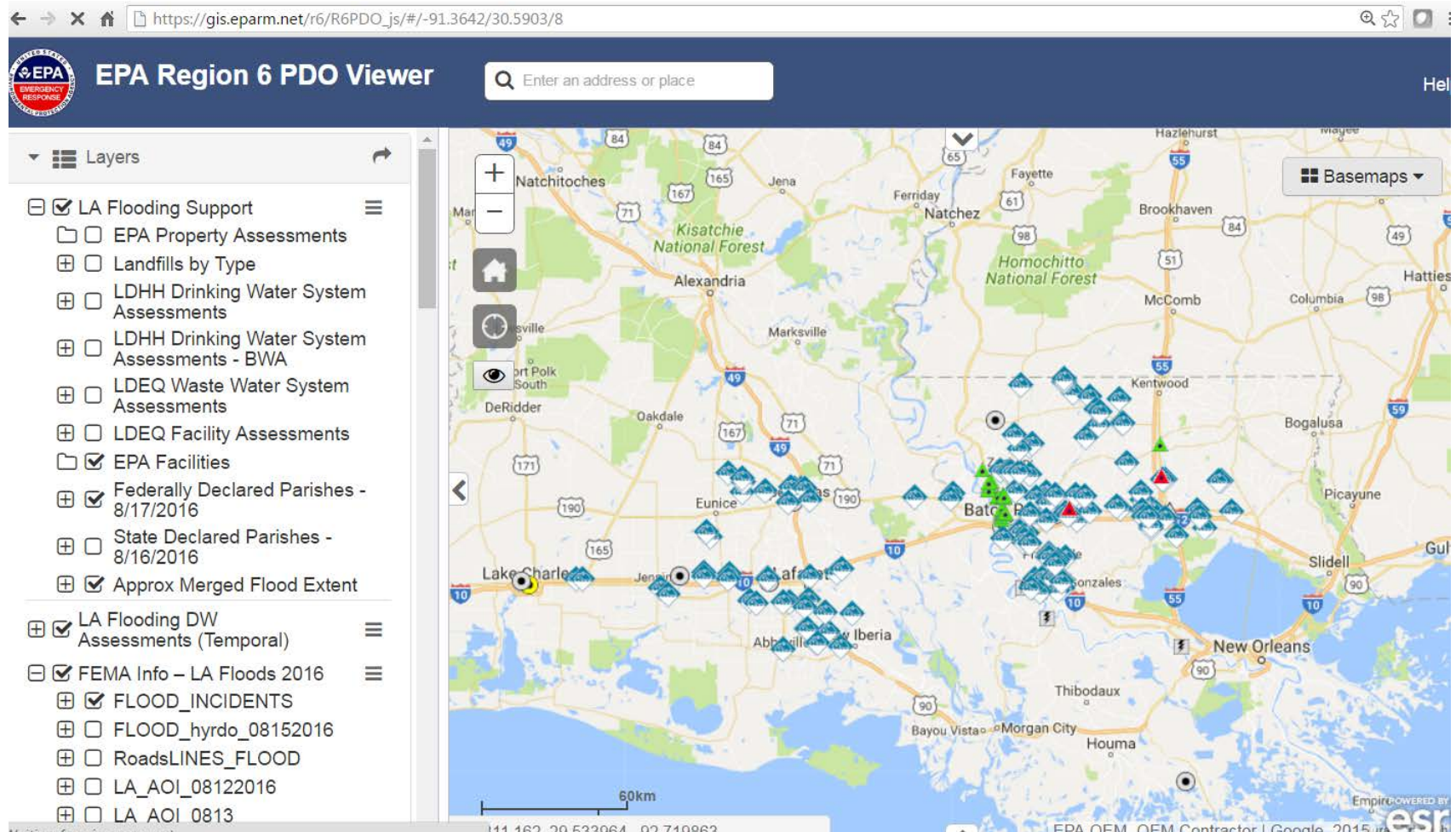
An "OVERVIEW MAP" button is located at the bottom left of the map area. The bottom right corner of the map area contains the text: "Esri, HERE, DeLorme, INCREMENT P, NGA."

# Reporting



## Common Operational Picture

- \* Interactive display of Current Assessment Data with other Operational Data



# Reporting



## SitRep Dashboard

- \* Dashboard showing Current and Rolling Temporal Status of Assessments by Operation

