

# USGS Response to Recent South Carolina Floods



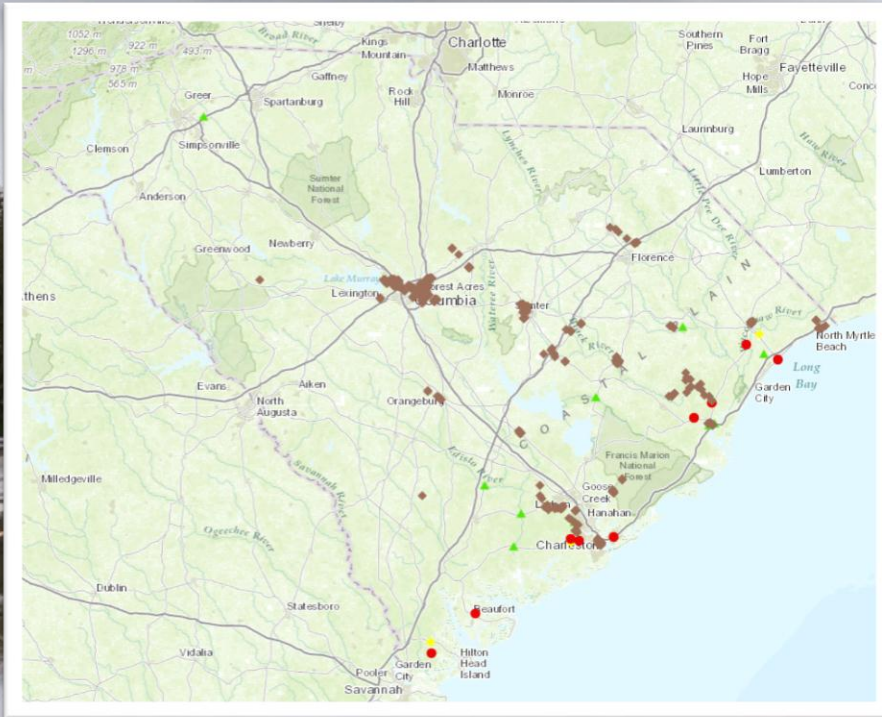
Figure 7. U.S. Geological Survey personnel making a streamflow measurement at station 02110701, Crabtree Swamp at Conway, South Carolina, using an acoustic Doppler current profiler.

Tim Cohn, USGS  
Office of Surface Water



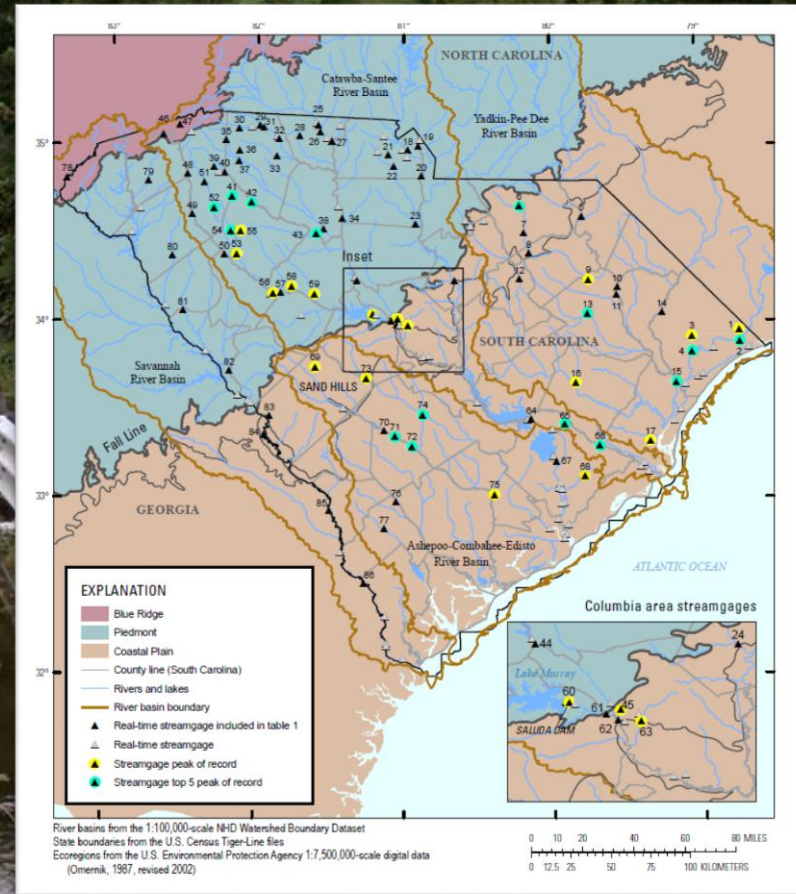
# USGS Response in South Carolina

Over 150 streamflow measurements:  
17 Sites - peak of record  
15 Sites - top 5 peak of record



USGS Flood Event Viewer

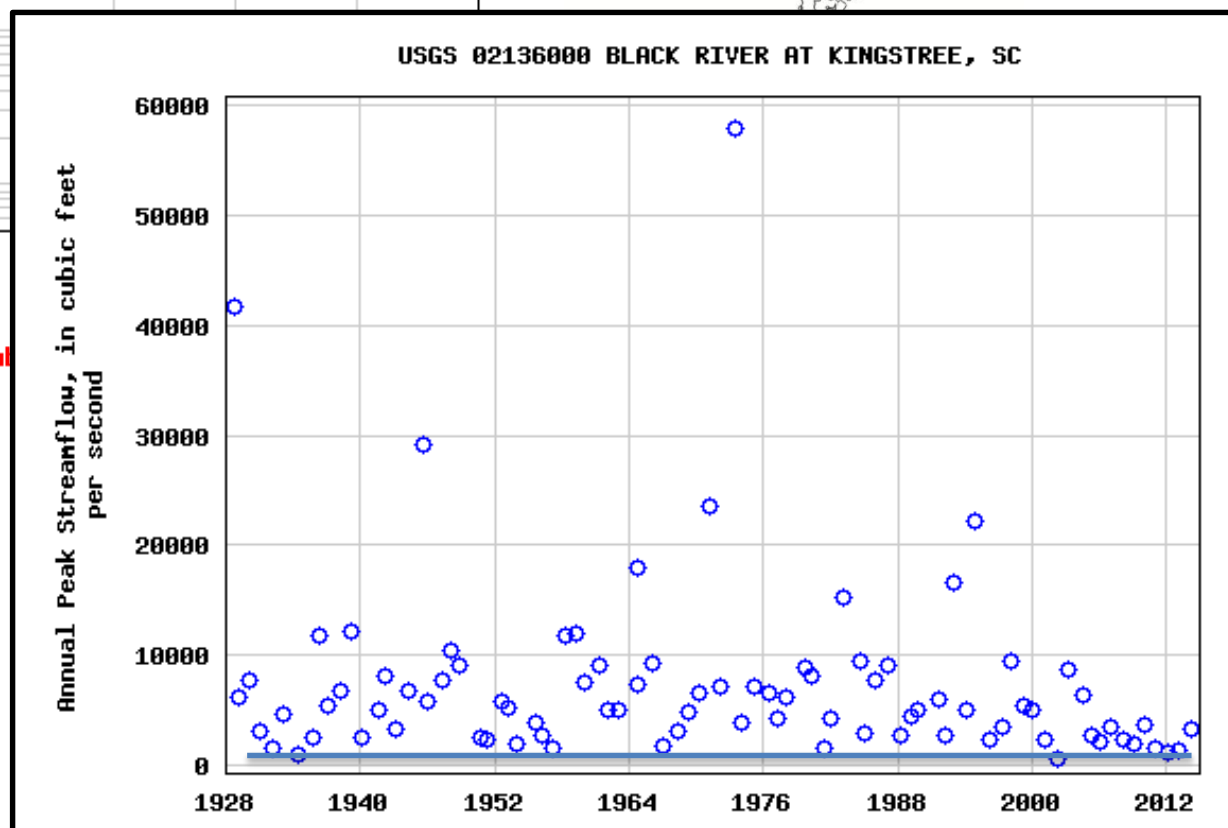
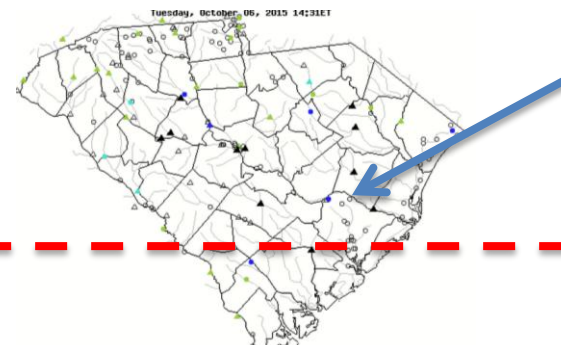
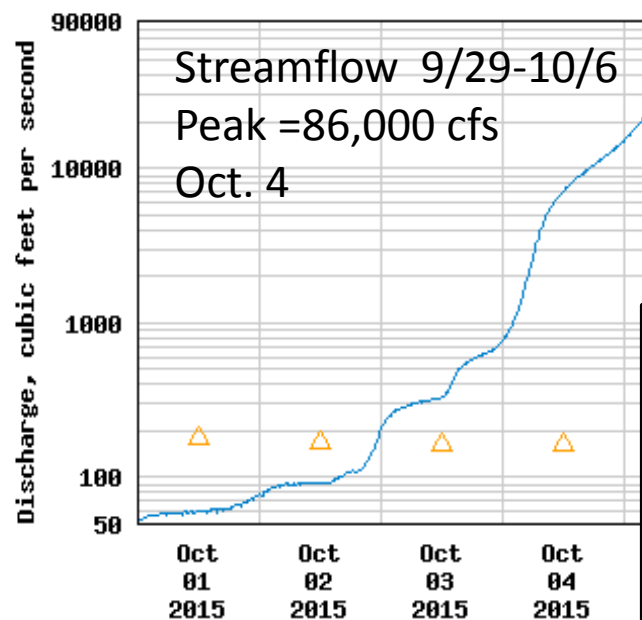
- Over 600 high water marks
- 13 Rapid deployment gages
- 9 Storm tide sensors
- 3 Barometric pressure sensor



From Feaster et al, 2015

# Black River at Kingstree (SC)

USGS 02136000 BLACK RIVER AT KINGSTREE, SC



**Black River at Kingstree (02136000)**  
**1928 - 2014**

