



USAID
FROM THE AMERICAN PEOPLE

USG Humanitarian Assistance to Philippines Typhoon Haiyan (Yolanda)

Presented by:

A. Sezin Tokar, Ph.D.

Senior Hydrometeorological Hazard Advisor

Office of U.S. Foreign Disaster Assistance

USAID



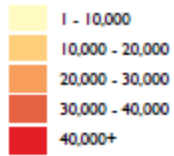
USAID
FROM THE AMERICAN PEOPLE

Agenda

- Characteristics
- Impacts
- Priority Needs
- USG Humanitarian Assistance
- International Funding
- Current Highlights

Image: NOAA

POPULATION AFFECTED



Source: NDRRMC

PHILIPPINES

11 Mil 5,598 3.8 Mil



Source: GPH National Disaster Risk Reduction and Management Council

LEGEND

- Storm Track
Source: Hurrevac
- Estimated Wind Swath
Source: Hurrevac
- USAID/OFDA USAID/FFP DoD**
- Humanitarian Coordination and Information Management
- Locally and Regionally Procured Emergency Food Assistance
- Logistics and Relief Commodities
- Protection
- Risk Management Policy and Practice
- Shelter and Settlements
- Title II Emergency Food Assistance
- Water, Sanitation, and Hygiene

South China Sea

Nov 8th 3pm (155 mph)

SUPER TYPHOON YOLANDA/HAIYAN

Nov 8th 9am (165 mph)

Nov 8th 3am (185 mph)

Nov 7th 9pm (195 mph)

AFFECTED AREAS

- OCHA**
- U.N. and NGOs**
- UNICEF**
- USAID/OFDA Airlifts**
- USAID/Philippines**
- WFP**
- WFP**
- DoD**

LEYTE

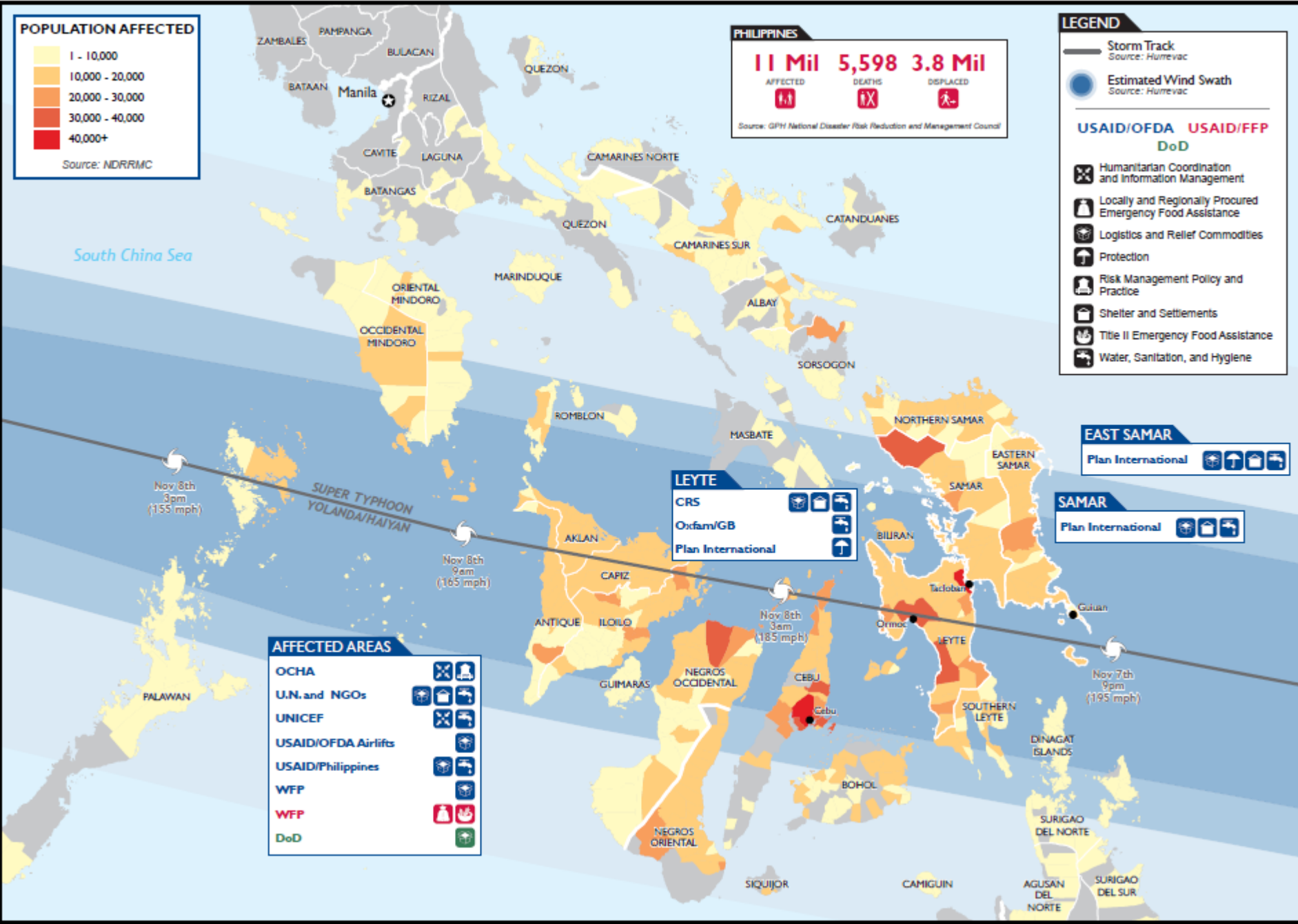
- CRS**
- Oxfam/GB**
- Plan International**

EAST SAMAR

- Plan International**

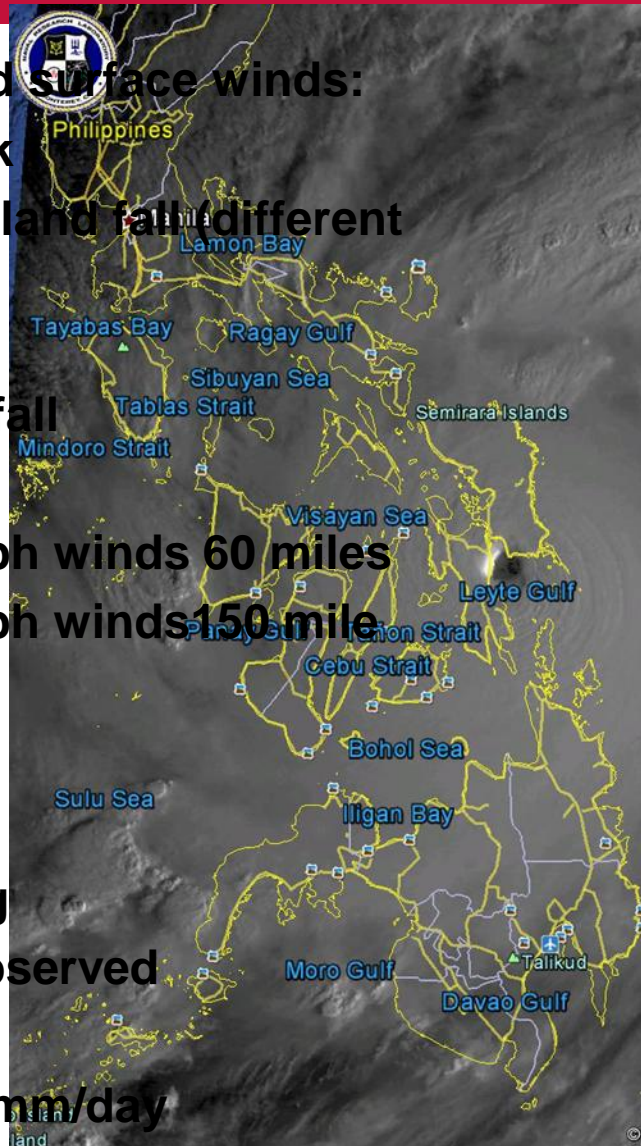
SAMAR

- Plan International**





- **Maximum sustained surface winds:**
 - 195 mph at peak
 - 195-186 mph at landfall (different estimates)
- **Central pressure**
 - 895 hPa at landfall
- **Size**
 - Radius of 74 mph winds 60 miles
 - Radius of 39 mph winds 150 miles
- **Speed**
 - 23-25 mph
- **Storm surge**
 - 7 meter warning
 - Over 5 meter observed
- **Rainfall**
 - Exceeding 250 mm/day





USAID
FROM THE AMERICAN PEOPLE

Impacts

- **11.2 million affected**
- **5,680 fatalities**
- **4 million displaced**
- **1.2 million houses damaged or displaced**
- **75% of crops and 60% tree crops destroyed**
- **65% fishing equipment**
- **Destroyed livelihoods of 5.6 million**





USAID
FROM THE AMERICAN PEOPLE

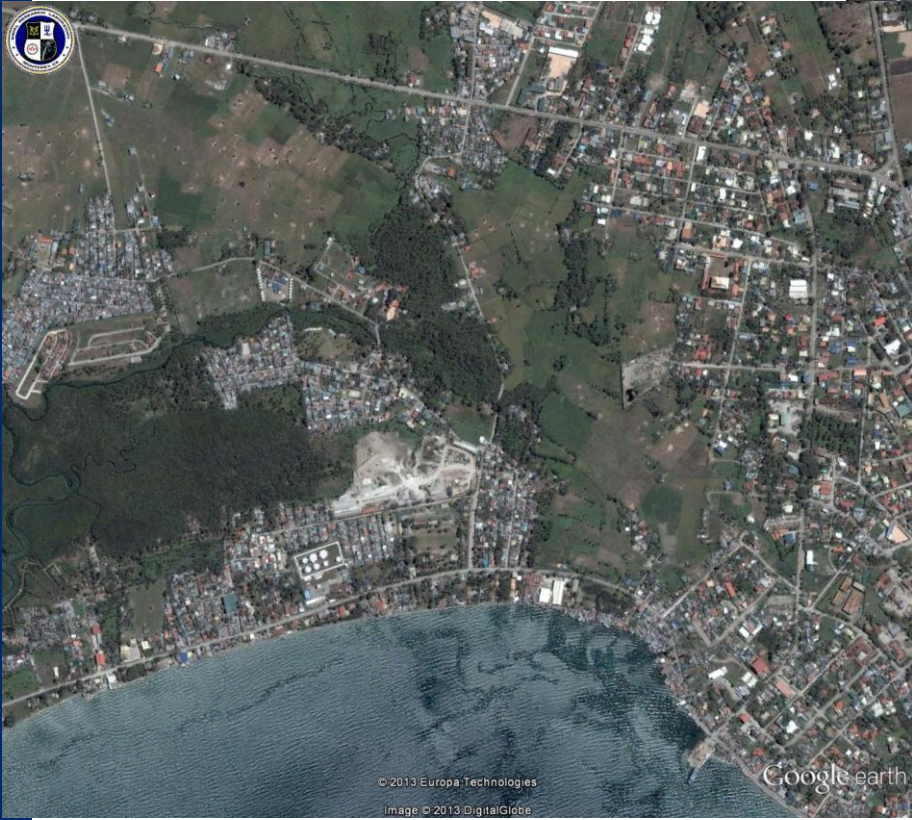
Guiuan, Eastern Samar





USAID
FROM THE AMERICAN PEOPLE

Ormoc, Leyte



© 2013 Europa Technologies

Image © 2013 DigitalGlobe

Google earth

© 2013 Europa Technologies

Image © 2013 DigitalGlobe

Google earth



USAID
FROM THE AMERICAN PEOPLE

Tacloban, Leyte



災害前 (光学画像) : GEOEYE-1/パナシャープ画像
観測日 : 2012年02月23日



災害後 (光学画像) : WORLDVIEW-2/パナシャープ画像
観測日 : 2013年11月11日





USAID
FROM THE AMERICAN PEOPLE

Priority Needs

- Food assistance
- Access to safe water
- Shelter
- Livelihoods recovery
- Restoration of basic services
- Displacement

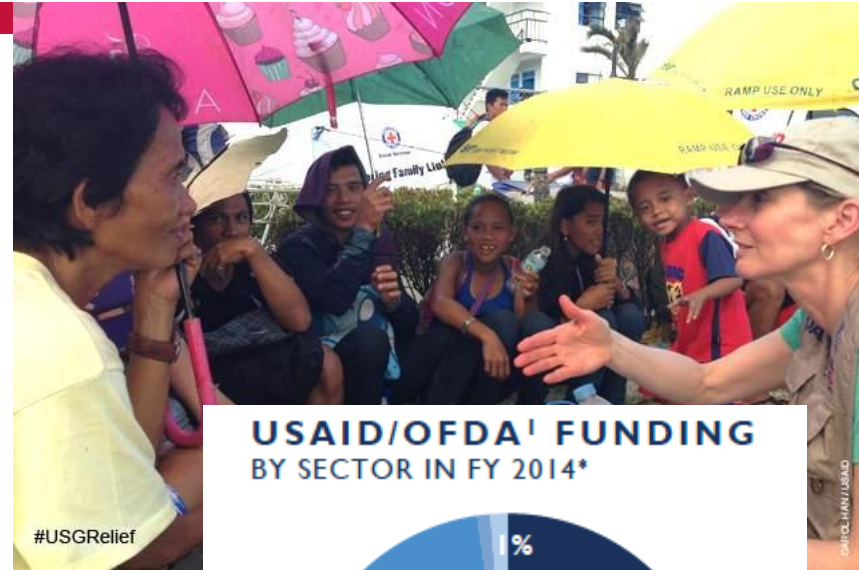




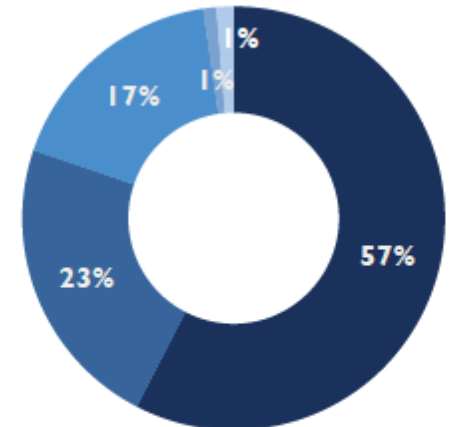
USAID
FROM THE AMERICAN PEOPLE

USG Humanitarian Assistance

- **USAID/OFDA: \$20,000,000**
- **USAID/FFP: \$10,064,400**
- **DOD: \$31,700,375**
- **Total USG: \$61,764,775**



USAID/OFDA¹ FUNDING BY SECTOR IN FY 2014*



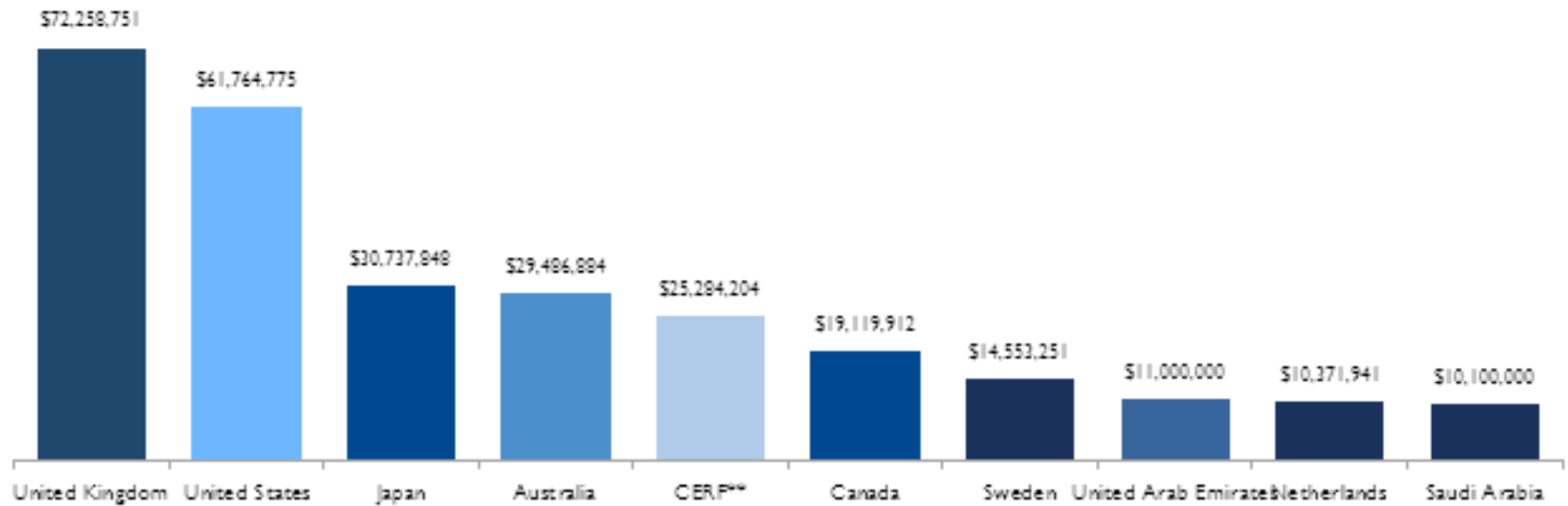
- Logistics & Relief Commodities (57%)
- Water, Sanitation, & Hygiene (23%)
- Shelter & Settlements (17%)
- Protection (1%)
- Humanitarian Coordination & Information Management (1%)





Total Humanitarian Funding

2013 TOTAL HUMANITARIAN FUNDING* PER DONOR





USAID
FROM THE AMERICAN PEOPLE

Current Highlights

- Transition from emergency relief to early recovery
- US Food Aid in Philippines
- Self-recovery and clean up
- Clearing main roads
- 40 meter exclusion zone/no build zone